

ICB Level Dashboard Example

This example shows dashboards from uploaded search files from participating PCNs across an ICB.

Dashboards enable ICBs to compare and measure the impact of SPECTRA across their PCNs.

The data-driven insights help healthcare professionals to make informed and targeted interventions along with understanding the resource allocation required.

Benchmarking allows healthcare organisations to measure the quality of care they provide against national standards.

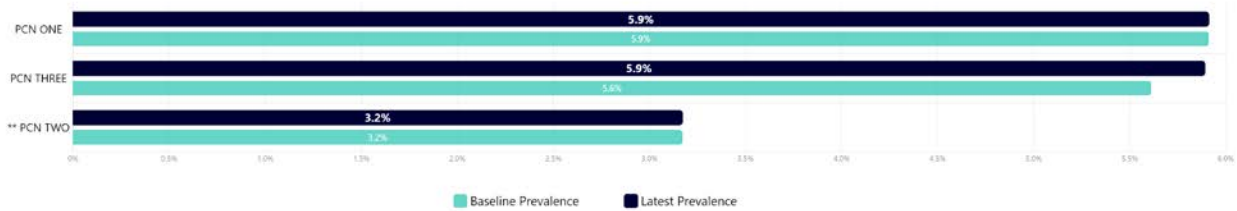
Dashboard for 3 PCNs in EXAMPLE ICB (222)

There are 3 practices who have uploaded their baseline search results across 3 PCNs. Out of these 3 practices, 2 have uploaded their follow-up search results. These are represented in the calculations in the paragraphs that go with each plot below.

Patients on Asthma Register Aged 18 and Over

There are currently 3,856 patients (5.89%) with Asthma aged 18 and over, compared to 3,681 patients (5.66%) at baseline, in the 2 practices in EXAMPLE ICB which have uploaded follow-up search results.

Plotted data can be toggled on/off by clicking on the relevant colour, or text, in the legend situated underneath each chart. Each bar can also be hovered over to see information specific to that practice.

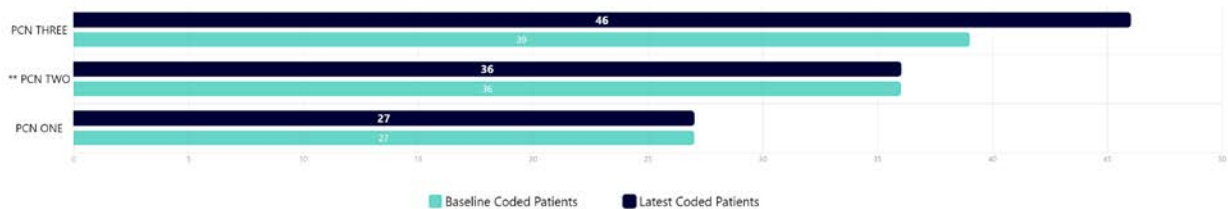


An double asterisk (**) next to a practice's name means that only their initial search results have been uploaded and they are not included in the calculations in the paragraphs accompanying the plots.

Patients Coded with Severe Asthma

In the 2 practices in EXAMPLE ICB which have uploaded follow-up search results, there are currently 73 patients coded with Severe Asthma, compared to 66 patients at baseline.

Plotted data can be toggled on/off by clicking on the relevant colour, or text, in the legend situated underneath each chart. Each bar can also be hovered over to see information specific to that practice.



Adult Asthma Patients on Inhaled Corticosteroids (ICS)
Patient Cohorts A & B



Cohort 1:
Adult asthma patients on high strength inhaled corticosteroids (ICS)*



Priority 1a
Cohort 1 patients with serious exacerbations (at least one hospital admission)
OR
2 or more exacerbations**



Priority 1b
Cohort 1 patients who have had 2 or more issues** of systemic corticosteroids*



Cohort 2:
Adult asthma patients on all other ICS* strengths



Priority 2a
Cohort 2 patients with serious exacerbations (at least one hospital admission)
OR
2 or more exacerbations**

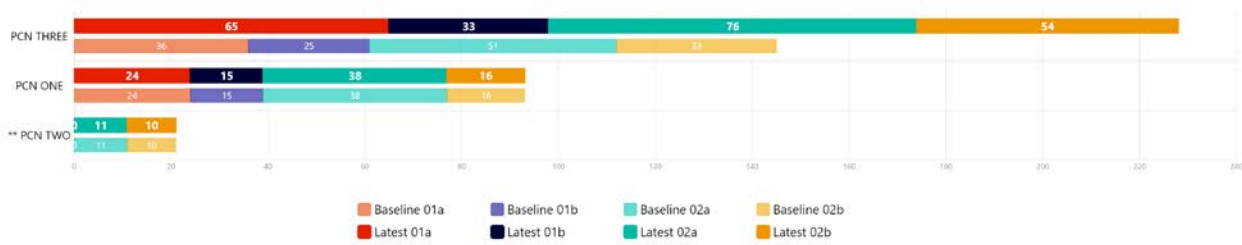


Priority 2b
Cohort 2 patients who have had 2 or more issues** of systemic corticosteroids*


* Click here to read the "Search Criteria" for a full list of drugs
* No referral in the last 12 months or current biologic ** In the last 12 months

In the 2 practices in EXAMPLE ICB which have uploaded follow-up search results, there are currently a total of 203 patients for review in the 'a' cohorts and a total of 118 patients patients in the 'b' cohorts, while at baseline there were 149 patients & 89 patients respectively.


Plotted data can be toggled on/off by clicking on the relevant colour, or text, in the legend situated underneath each chart. Each bar can also be hovered over to see information specific to that practice.




Adult Asthma Patients on Inhaled Corticosteroids (ICS)
Patient Cohorts C & D




Cohort 1:
Adult asthma patients on high strength inhaled corticosteroids (ICS)*




Priority 1c
Cohort 1 patients who have had 6 or more issues** of reliever inhaler*




Priority 1d
Cohort 1 patients with "Poor Symptom Control" coded**
OR
latest asthma control test (ACT) < 20



Cohort 2:
Adult asthma patients on all other ICS* strengths



Priority 2c
Cohort 2 patients who have had 6 or more issues** of reliever inhaler*



Priority 2d
Cohort 2 patients with "Poor Symptom Control" coded**
OR
latest ACT < 20

* Click here to read the "Search Criteria" for a full list of drugs
* No referral in the last 12 months or current biologic ** In the last 12 months

In the 2 practices in EXAMPLE ICB which have uploaded follow-up search results, there are currently a total of 421 patients for review in the 'c' cohorts and a total of 297 patients patients in the 'd' cohorts, while at baseline there were 425 patients & 239 patients respectively.

Plotted data can be toggled on/off by clicking on the relevant colour, or text, in the legend situated underneath each chart. Each bar can also be hovered over to see information specific to that practice.





Impact of the Review and Referral Process Across EXAMPLE ICB

Patients Reviewed Since Baseline

In the 2 practices in EXAMPLE ICB which have uploaded follow-up search results, there are a total of 293 patients who have been reviewed since baseline.

The accuracy of the charts below is dependent upon the correct coding, by each practice, of their patients that are "Reviewed" and "Referred", using the coding referenced within the SPECTRA reports.



Patients Referred Since Baseline

In the 2 practices in EXAMPLE ICB which have uploaded follow-up search results, there are a total of 58 patients who have been referred since baseline.

